

Complimentary SEL Summer Series

Presented by Kristin Souers
(author of *Fostering Resilient Learners*)

Join us as we welcome Kristin Souers, co-author of *Fostering Resilient Learners* for a week long mini-series of SEL topics:

Times: 10:00-11:15am, each day

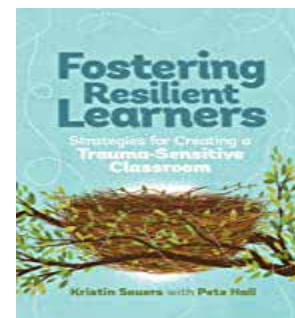
*Monday, June 16: *Approaching Interventions-Key Steps to Approach Students Who Struggle.*

*Tuesday, June 17: *Essential Understandings for Trauma Invested Practices.*

*Wednesday, June 18: *Attendance Matters.*

*TH, June 19: *Need vs Behavior & the Three Rs.*

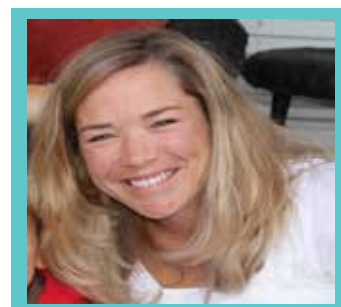
*Fri, June 20: *Ten Steps to Having a Hard Conversation.*



Join us:
The week of
June 16-20
ONLINE
Register for one
date OR all five
dates!

Visit our site: www.roe24.org Or click on the QR codes

For over three decades, Kristin Van Marter Souers, MA LMH-C, has dedicated herself to the improvement of people's lives. She is an award-winning author of *Fostering Resilient Learners: Strategies for creating a trauma-sensitive classroom environment* (ASCD, 2016) and *Relationship, Responsibility, and Regulation: Trauma-Invested Practices for Fostering Resilient Learners* (ASCD, 2019) as well as many other publications and articles. As an independent consultant, Kristin now provides critical professional development, consultation, education, and training services to schools, school districts, healthcare providers, businesses, and other community organizations.



PD provided by
ROE#24



June 16th
QR Code:

June 17th
QR Code:

June 18th
QR Code:

June 19th
QR Code:

June 20th
QR Code:

